

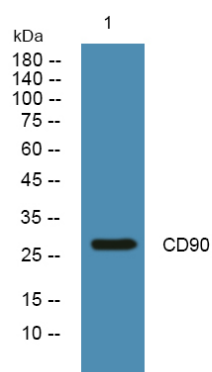


# CD90 Polyclonal Antibody

<b>Catalog No</b>	YP-Ab-13916
<b>Isotype</b>	IgG
<b>Reactivity</b>	Human;Rat;Mouse;
<b>Applications</b>	WB;ELISA
<b>Gene Name</b>	THY1
<b>Protein Name</b>	Thy-1 membrane glycoprotein
<b>Immunogen</b>	The antiserum was produced against synthesized peptide derived from human THY1. AA range:51-100
<b>Specificity</b>	CD90 Polyclonal Antibody detects endogenous levels of CD90 protein.
<b>Formulation</b>	Liquid in PBS containing 50% glycerol, 0.5% BSA and 0.02% sodium azide.
<b>Source</b>	Polyclonal, Rabbit,IgG
<b>Purification</b>	The antibody was affinity-purified from rabbit antiserum by affinity-chromatography using epitope-specific immunogen.
<b>Dilution</b>	Western Blot: 1/500 - 1/2000. ELISA: 1/10000. Not yet tested in other applications.
<b>Concentration</b>	1 mg/ml
<b>Purity</b>	≥90%
<b>Storage Stability</b>	-20°C/1 year
<b>Synonyms</b>	THY1; Thy-1 membrane glycoprotein; CDw90; Thy-1 antigen; CD antigen CD90
<b>Observed Band</b>	28kD
<b>Cell Pathway</b>	Cell membrane ; Lipid-anchor, GPI-anchor .
<b>Tissue Specificity</b>	Amygdala,Brain,Eye,Liver,
<b>Function</b>	function:May play a role in cell-cell or cell-ligand interactions during synaptogenesis and other events in the brain.,similarity:Contains 1 Ig-like V-type (immunoglobulin-like) domain.,
<b>Background</b>	This gene encodes a cell surface glycoprotein and member of the immunoglobulin superfamily of proteins. The encoded protein is involved in cell adhesion and cell communication in numerous cell types, but particularly in cells of the immune and nervous systems. The encoded protein is widely used as a marker for hematopoietic stem cells. This gene may function as a tumor suppressor in nasopharyngeal carcinoma. Alternative splicing results in multiple transcript variants. [provided by RefSeq, Jul 2015],
<b>matters needing attention</b>	Avoid repeated freezing and thawing!

**Usage suggestions**

This product can be used in immunological reaction related experiments. For more information, please consult technical personnel.

**Products Images**

Western blot analysis of lysates from Jarkat cells, primary antibody was diluted at 1:1000, 4° over night